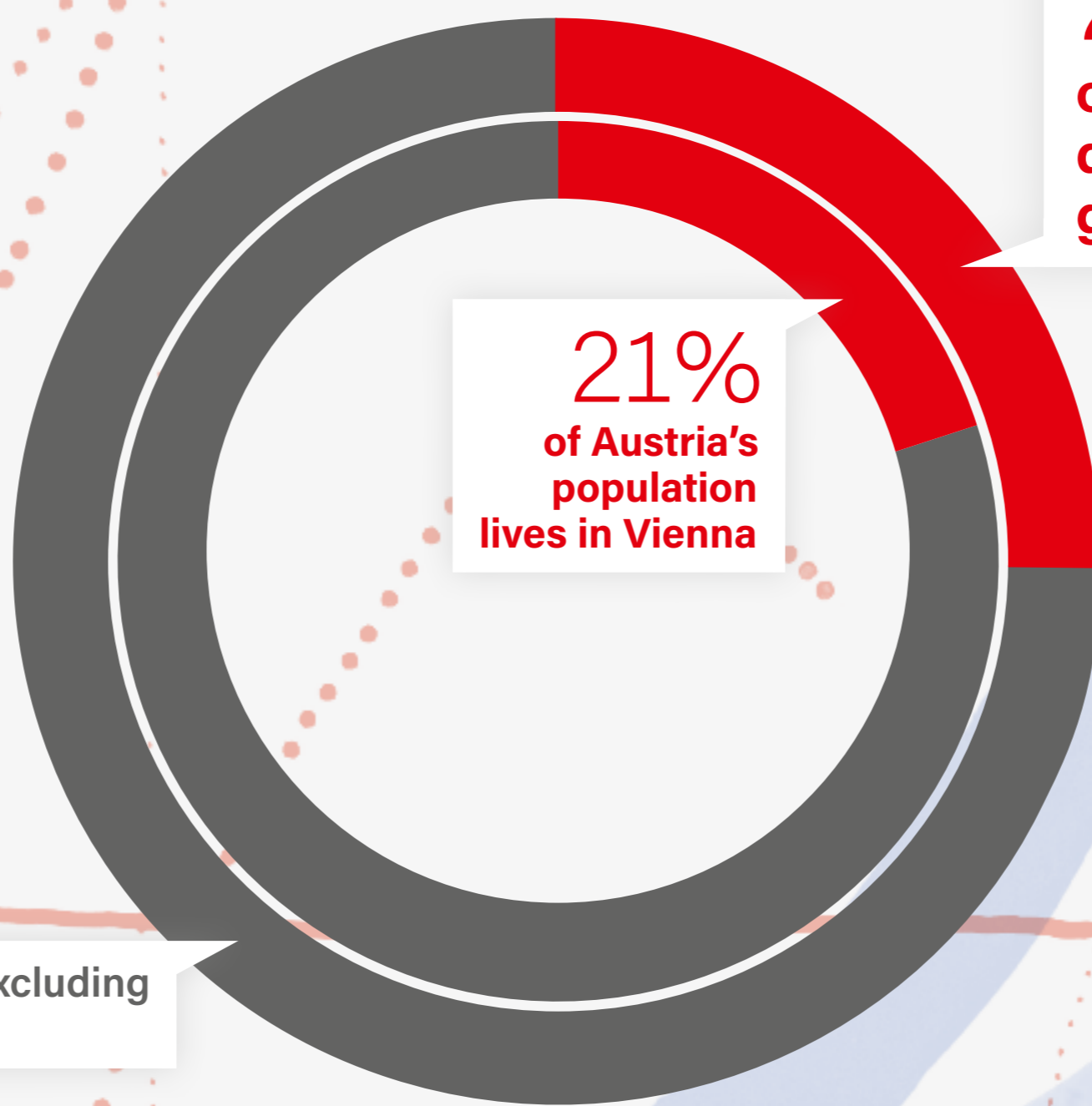


194,145

students (winter semester 2017/18)
= Vienna is the biggest university city in the German-speaking region (cf. Berlin 180,000, Munich 122,000)

REGIONAL SHARE IN AUSTRIAN GDP / IN AUSTRIAN POPULATION



1.89 million

people live in Vienna, the sixth-largest city of the European Union (as per 1 January 2018).

35%

is the percentage by which Vienna's labour productivity exceeds the EU average (2016).

Austria excluding Vienna

Economic performance — Vienna and Austria, 2016 (Source: Statistics Austria)

45,644

R&D personnel (headcount, 2015)
= 36% of all R&D personnel in Austria

9,098

new enterprises were set up in Vienna in 2017.

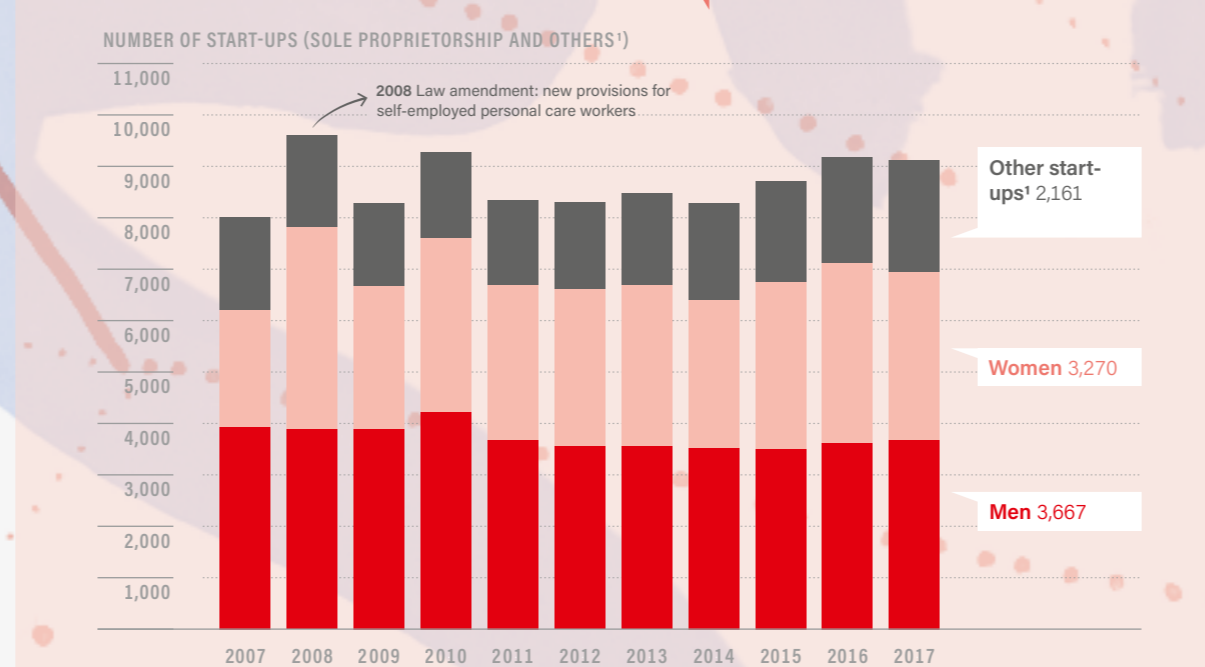
97.8%

Vienna's working population disposes of a purchasing power similar to that of citizens of New York – and markedly surpasses that of most EU capital cities.

NUTS 2 REGION	SHARE IN TOTAL WORKFORCE (HEADCOUNT) IN %
1. Inner London – West (UK)*	11.10%
2. Brabant wallon (BE)	5.50%
3. Wien (Vienna, AT)	5.42%
4. Hovedstaden (Copenhagen, DK)	5.33%
5. Praha (Prague, CZ)	5.32%
6. Braunschweig (DE)	4.91%
7. Steiermark (Styria, AT)	4.57%
8. Berkshire, Buckinghamshire & Oxfordshire (UK)	4.46%
9. Région de Bruxelles-Capitale (Brussels, BE)	4.45%
10. Helsinki-Uusimaa (FI)	4.36%

Share of R&D personnel across the EU — Top 10 NUTS 2 regions of the EU, 2015 (Source: Eurostat)

* The NUTS 2 region "Inner London – West" only comprises some parts of London. The share of R&D workers was 2.38% in Greater London.



Start-ups — Vienna, 2007 to 2017 (Source: Austrian Economic Chamber)

* Limited liability companies, limited partnerships, general commercial partnerships, associations, stock companies, other legal forms of businesses

CITY	PURCHASING POWER INDEX, NEW YORK = 100
Berlin (DE)	99.0
Vienna (AT)	97.8
Stockholm (SE)	87.7
Copenhagen (DK)	87.0
London (UK)	81.8
Rome (IT)	81.2
Helsinki (FI)	78.4
Amsterdam (NL)	76.1
Paris (FR)	66.2
Madrid (ES)	57.5
Warsaw (PL)	47.8
Prague (CZ)	41.7
Athens (GR)	38.6
Bratislava (SK)	33.7
Budapest (HU)	33.6
Bucharest (RO)	32.8

Purchasing power across the EU — Selected capital cities of the EU, 2018 (Source: UBS)

18 minutes

is the average working time required in Vienna to be able to buy a Big Mac® (2018).

1st place

According to the Mercer Quality of Living Survey and The Economist, Vienna is the world's most liveable city (2018).

3.66%

= Vienna's research quota (2015)

CITY	AVERAGE WORKING TIME REQUIRED TO BE ABLE TO BUY A BIG MAC®, IN MINUTES
Copenhagen (DK)	16.9
London (UK)	17.0
Vienna (AT)	17.9
Berlin (DE)	18.4
Amsterdam (NL)	21.2
Stockholm (SE)	21.5
Paris (FR)	23.1
Rome (IT)	23.5
Helsinki (FI)	24.0
Brussels (BE)	26.9
Madrid (ES)	27.8
Warsaw (PL)	32.8
Bucharest (RO)	40.2
Prague (CZ)	42.3
Athens (GR)	43.9
Bratislava (SK)	48.0
Budapest (HU)	55.6

Big Mac® Index across the EU — Selected capital cities of the EU, 2018 (Source: UBS)

RANK	QUALITY OF LIVING SURVEY 2018 (MERCER)	GLOBAL LIVEABILITY RANKING 2018 (ECONOMIST INTELLIGENCE UNIT)	SMART CITY INDEX 2017 (ROLAND BERGER)	THE WORLD'S MOST REPUTABLE CITIES 2018 (REPUTATION INSTITUTE)
1	Vienna	Vienna	Vienna	Tokyo
2	Zurich	Melbourne	Chicago	Sydney
3	Auckland	Osaka	Singapore	Copenhagen
4	Munich	Calgary	London	Vienna
5	Vancouver	Sydney	Santander	Stockholm
6	Düsseldorf	Vancouver	New York	Venice
7	Frankfurt	Toronto	Parramatta	Rome
8	Geneva	Tokyo	Seoul	Zurich
9	Copenhagen	Copenhagen	Barcelona	Munich
10	Sydney & Basel	Adelaide	Denver	Montreal
Cities	231	140	87	56

Vienna in international rankings — Highest quality of life worldwide

NUTS 2 REGION	R&D SPENDING IN % OF GROSS REGIONAL PRODUCT
Braunschweig (DE)	9.50%
Hovedstaden (Copenhagen, DK)	4.59%
Stockholm (SE)	3.81%
Wien (Vienna, AT)*	3.66%
Helsinki-Uusimaa (FI)	3.61%
Berlin (DE)	3.53%
Praha (Prague, CZ)	2.97%
Île-de-France (Paris, FR)*	2.90%
Köszép-Magyarország (Budapest, HU)	1.88%
Bratislavský kraj (Bratislava, SK)	1.78%
Région de Bruxelles-Capitale (Brussels, BE)	1.74%
Mazowieckie (Warsaw, PL)	1.72%
Noord-Holland (Amsterdam, NL)	1.72%
Comunidad de Madrid (ES)	1.60%
Lazio (Rome, IT)	1.60%
Attiki (Athens, GR)	1.15%
London (UK)*	1.08%
București - Ilfov (Bucharest, RO)	0.92%

R&D quotas across the EU — Selected cities/urban regions of the EU, 2015 (Source: Eurostat)

* Vienna's above research quota of 3.66% deviates slightly from the current quota determined by Statistics Austria, since Eurostat still shows the non-revised figure.
* 2013 figure
* NUTS 1 region, comprises Greater London

